

# The 4C Connection

From Our Services to Yours - Spring 2023



4C For Children is the Child Care Resource & Referral Agency (CCR&R) serving the Kenosha, Milwaukee, Ozaukee, Racine, Washington, and Waukesha Counties in Southeastern Wisconsin



## Main Office

1736 N 2nd Street  
Milwaukee, WI 53212  
Phone: 414-562-2650  
Fax: 414-562-2651  
[www.4cfc.org](http://www.4cfc.org)

## 4C Family Center Of Washington County

2376 W Washington St  
West Bend, WI 53095  
Phone: 262-338-9461

Be sure to follow us  
on Facebook and  
Instagram!  
Facebook:  
[4C For Children](https://www.facebook.com/4cforchildren)  
Instagram:  
[4cforchildrenwi](https://www.instagram.com/4cforchildrenwi)

## Our Spring and Summer class schedule is out NOW!!

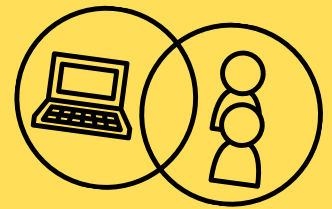
### Upcoming classes include:

#### Health and Safety Courses:

- DCF approved Adult and Pediatric First Aid/CPR/AED
- Child Abuse & Neglect
- Sudden Infant Death Syndrome
- Abusive Head Trauma Prevention

#### Child Care Foundational Training Courses:

- Introduction to the Child Care Profession
- Fundamentals of Infant and Toddler Care
- Fundamentals of Family Child Care
- Skills and Strategies for the Child Care Teacher



#### Continuing Education:

- Strengthening Families with Mandated Reporter
- WI Model Early Learning Standards
- WI Pyramid Model e-Modules w/coaching and 8 Part Series

Most are virtual, held LIVE with an instructor via Zoom Video.  
Visit our website for specific class information and to register:  
<https://www.4cfc.org/courses/>

Thanks for Choosing 4C For Children for all of your training needs.

**DID YOU  
KNOW?**



**Need to drop off some  
paperwork or have a  
document that needs to  
be returned to 4C?**

**The 4C For Children  
office located  
at 1736 N 2nd Street  
has a 24 hour drop box!**

# Wisconsin Training and Technical Assistance Professionals (T-TAP) Courses

Have you thought about becoming a Trainer or a Technical Consultant? Then the T-TAP Trainings are for you. We are offering them this May through June held LIVE with an instructor via Zoom Video. All individuals seeking the Wisconsin Tier Trainer endorsement must complete T-TAP Courses.

- Foundations Course is the foundation of learning the T-TAP system and is required.
- Training Professional is the second course and guides you into becoming a trainer in the field.
- Technical Assistance Professional is the third course which will help you understand how to be a consultant in the field.



To register [click here!](#)



## As of May 1st, your local YoungStar office has changed!

**Kenosha, Milwaukee, Racine, & Waukesha**  
Southeastern Region YoungStar Office:  
1433 North Water Street, Suite 400  
Milwaukee, WI 53202  
E: [info@youngstarconnect.com](mailto:info@youngstarconnect.com)  
W: <https://www.youngstarconnect.com/>  
P: 1- 414-312-5888



**Ozaukee and Washington**  
Northeastern Region YoungStar Office:  
532 W College Avenue  
Appleton, WI 54911  
E: [info@youngstarconnect.com](mailto:info@youngstarconnect.com)  
W: <https://www.youngstarconnect.com/>  
P: 1- 920-644-5356



## SAVE THE DATE!!!

The 2023 Pathways conference will be held October 2-7!  
Virtual session October 2-6 and in-person on the 7th.

Be sure to follow the Pathways Facebook page for updates @  
<https://www.facebook.com/PathwaystoQualityMilwaukee>

## 4C For Children and Family Center of Washington County

Thanks to everyone that stopped  
by Pizza Ranch on April 24  
for our fundraiser!



*thank you*





4C For Children



# Provider Resource Room

The new 4C For Children Provider Resource Room is stocked for you to develop materials for your child care program curriculum, schedules, guides, learning centers, and more! Our resource room provides access to technology and computers to create engaging and enriching environments, lesson plans, and tools for family engagement.

## Resources Include:

- ✓ Laminator
- ✓ Dye Cut Machines
- ✓ Copier and Printer
- ✓ Educational Toolkits
- ✓ Computers

\*Nominal fees may apply

Call to make an appointment:

414-562-2676

## Hours by Appointment:

Monday - Thursday  
9 am to 3 pm

## Our Address:



1736 N 2nd St,  
Milwaukee, WI 53212

The new 4C For Children Provider Resource Room was generously funded by the Greater Milwaukee Foundation.

## Have you heard of the Partner Up! Grant Program?

Partner Up! is a state initiative focused on supporting partnerships between businesses and child care providers. The grant offers funding for businesses to purchase child care slots for their employees' children at existing regulated child care centers. Businesses receive funding based on the true cost of care, number of child care slots and the ages of the children being supported.

With the Partner Up! Program, the employer will help pay for a minimum of 25-35% of the child care cost. Parents may contribute up to 10% of the true cost of care, and the funding pays for the remaining balance. Employees will receive accessible high-quality childcare at little out of pocket cost to them.

The child care facilities will receive the True Cost of Care as determined by DCF each month. Any extra funds over tuition for the children enrolled in a child care center can be used in a number of different ways to improve the business (i.e. Training or upgrades to the facility for example.)

Visit our website for more information. <https://www.4cfc.org/partner-up-grant-program/>

## DCF Southeast Regional Office and Initial Licensing News

DCF's SERO holds bi-monthly Certification Orientation (CO) sessions for prospective Certified Family Child Care providers. Registrants will receive the application packet after attending one of the scheduled 2023 Certification Orientation sessions. The CO sessions are held at 4C For Children on the first and third Tuesday of each month from 12:00 pm- 3:00 pm. Please contact DCF SERO at 262-446-7800 if you are interested in operating a Certified Child Care Center. No certified family child care operator may have more than 3 children under 7 years of age who are not related to the child care operator in care at any given time.

DCF's SERO holds the Family (2nd Tuesday) and Group Provider (4th Tuesday) Tool Kit sessions monthly from 12-3:00 pm. If a child care provider cares for 4 or more children under the age of 7 who are not related to the provider, for compensation, the provider must obtain from the Department of Children and Families, Bureau of Early Care and Regulation a license to operate a child care center.

## Child Care Counts Updates

There are some important changes coming for Child Care Counts: Stabilization Payment Program Round 3. Here are some of the biggest changes for Round 3:

1. There will be a significant decrease in funding for Round 3
2. There is a new participation deadline – providers must be approved for funding during one of the first four months (May, June, July, or August) to be eligible for future payments (September-January)
3. The Update Week has been extended for each month – this change is a result of provider feedback

In addition, there are several changes to the Allowable Use of Funds due to federal requirements for the Round 3 funding source. Click here to see the [Child Care Counts webpage](#) for highlights, and read the [Round 3 Terms and Conditions](#) for full details. [Child Care Counts Website: https://dcf.wisconsin.gov/covid-19/childcare/payments#round3](https://dcf.wisconsin.gov/covid-19/childcare/payments#round3)  
Spending Deadline Reminder

- All Stabilization Payment Program funds must be spent within 120 days from the date of the payment letter. December 2022 funds must be spent by May 13, 2023.

If you need assistance, email [DCFDECECOVID19CCPayments@wisconsin.gov](mailto:DCFDECECOVID19CCPayments@wisconsin.gov) or call and speak with a Support Center Specialist at 608-535-3650.

# Accreditation Facilitation Project @ A Glance

Great news! The zip code requirement to participate in The Accreditation Facilitation Project has been removed and we are now enrolling programs located in the City of Milwaukee who are interested in pursuing accreditation. To learn more about the benefits of pursuing accreditation and the support AFP can offer you while on your accreditation journey.

Schedule an AFP information session TODAY! Contact the 4C For Children AFP Coordinator Today! Ashley Harrell | [aharrell@4cfc.org](mailto:aharrell@4cfc.org) | 414.588.8692

Or complete our AFP Interest Form: <https://forms.office.com/r/rKdKTXKzbp>

Learn More About the Accreditation Pathways:

Family Child Care Programs – [National Association of Family Child Care](#)

Group Child Care Programs – [National Association for the Education of Young Children](#)

## 4C Food Program News and Updates

We are excited to announce that the 4C Food Program has resumed routine in-person CACFP home review visits to all participating providers enrolled on the 4C Food Program. We can't wait to see you!

4C For Children must review family child care homes 3 times per year (ON- SITE)

All 3-Visits will be ON-SITE and 2 of 3 home visits must be unannounced at the Provider's family child care home. One unannounced home visit must include a meal observation.

What to expect on your CACFP Visits with your Field Representative:

Menus – Daily entry of menus and current attendance sheet will be checked for completion

Sanitation- The following area will be checked for sanitation:

- Handwashing
- Refrigerator & freezer temperature
- General cleanliness
- Garbage storage
- Food storage

USDA Meal Pattern- Whole Grain Rich products, Milk, Yogurt, Cereal, Combination Foods


Copy of Forms- Copies of:

- Current menu & attendance forms
- Approved Income eligibility letter to claim your own children
- Claim Error letters
- Child Enrollment forms
- Past home review visits
- Original DPI Application and Agreement forms
- Annual training certificate

Current license or certificate posted

Discussion of Nutrition and Healthy Meals

The 4C Food program can be reached by calling 414-562-2652, Monday-Friday from 8:30am to 4:30pm.



Looking for some great recipes?  
Look no further! Check Out  
Healthy Recipes for Child  
Nutrition Professionals at  
<https://theicn.org/cnrb/2022-cacfp-recipes/>



## What is Behavior Help Wisconsin?

Behavior Help Wisconsin is a program that helps early childhood care and education providers who feel challenged by the behavior of a child. Behavior Help Coaches provide one-on-one coaching to the child's parents/guardians and care provider to equip you with tools, knowledge, and skills to reduce challenging behaviors and promote positive ones.



Our evidence-based approach strengthens the social-emotional development of young children as identified in the Wisconsin Model Early Learning Standards. If you are feeling challenged by a child's behavior and aren't sure what else to try, Behavior Help Wisconsin can provide you with strategies that will encourage positive behaviors and strengthen your relationship with the child. **Visit our website for more information:** <https://www.4cfc.org/bhw/>

## City of Milwaukee Early Childhood Workforce Stipend Program

A stipend program is available for individuals who work in child care programs located in the city of Milwaukee.

**Eligible applicants who work in caregiving roles will receive a \$1,500 stipend in three installments.**

Wisconsin Early Childhood Association (WECA) is pleased to facilitate providing this opportunity with American Rescue Plan Act (ARPA) funding allocated by the Milwaukee Common Council to support early care and education initiatives. The program's goal is to increase early childhood educator wages and reduce turnover, which improves the quality of child care for Milwaukee's young children and their families.

**ELIGIBILITY REQUIREMENTS** - All eligibilities must be met to receive the stipend:

- Be employed by a child care program in the City of Milwaukee, which is either:
  - a group child care program licensed by Wisconsin Department of Children and Families (DCF)

- OR -

- a family child care program licensed or certified by Wisconsin Department of Children and Families (DCF)
- Work in a caregiving role, defined as working directly in daily care of children as your primary role, in a classroom in a group program, or in a family child care program. This covers lead teachers, assistant teachers, and family child care providers (and employees of family child care providers).
- Have 3 months of current and continuous employment at your current employer.

## APPLICATION PROCESS

- You will receive an email confirmation after you successfully submit your application. If you do not see it immediately, check your spam or junk folders. It can take several months to process your application. If you received your confirmation, your application is processing. Please do not submit multiple applications.
- If you meet all program eligibilities, you will receive a \$1,500 stipend in three installments: the first installment, in the amount of \$500, upon application and being found eligible; the second installment, in the amount of \$500, four months later if you continue to meet eligibilities; the third installment, in the amount of \$500, four months later if you continue to meet eligibilities.
- You will receive renewal materials by email when it is time to receive your second and third stipends.

**APPLY NOW** - Full Application Link: <https://weca.info/MKEapp>

Once you receive the full \$1,500, you are no longer eligible for payments from this program.

Any questions? Please contact us at: [mkestipend@wisconsinearlychildhood.org](mailto:mkestipend@wisconsinearlychildhood.org) or by phone: 608-230-8005